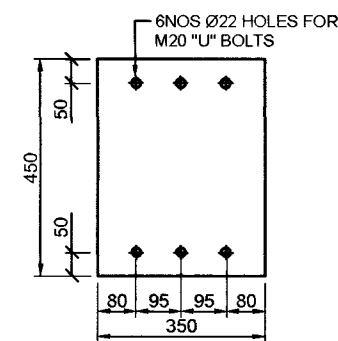
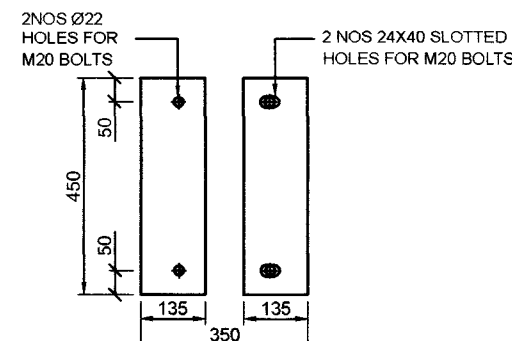


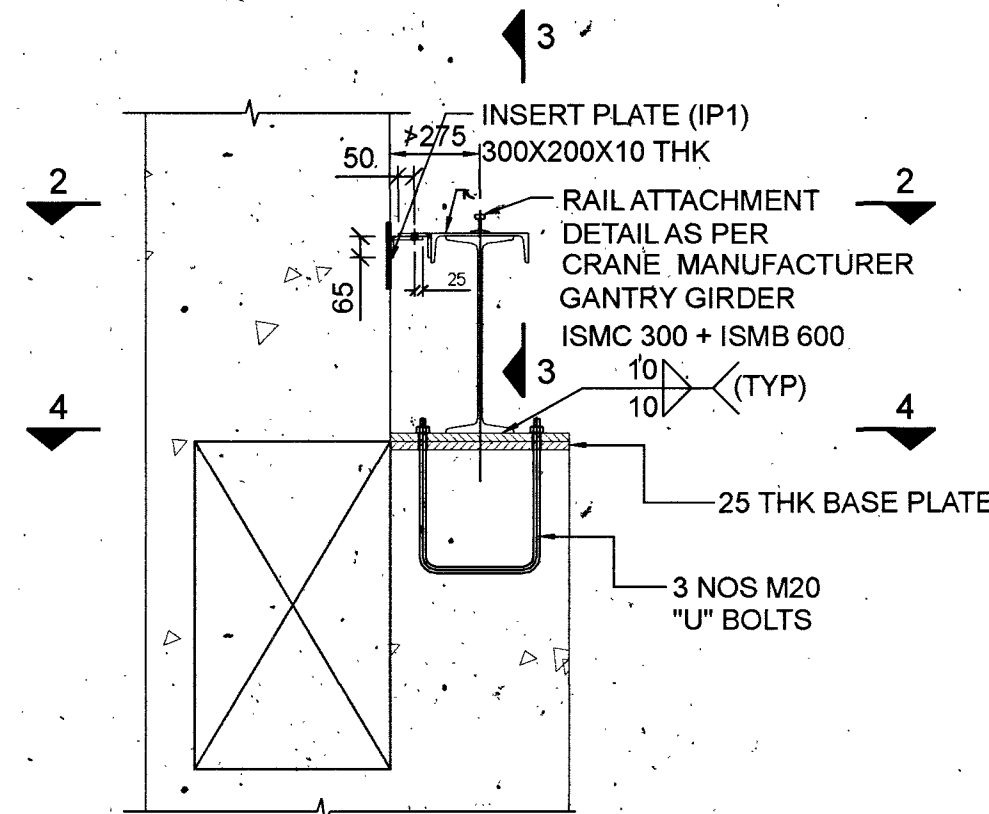
**SECTION 2**  
SCALE 1:25



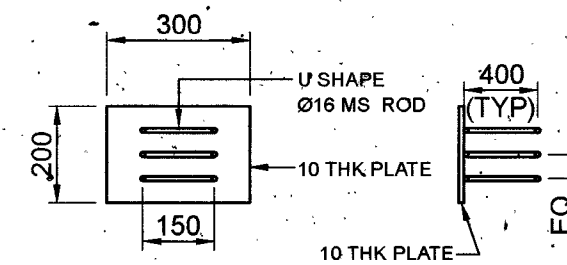
BASE PLATE DETAIL  
SCALE 1:15



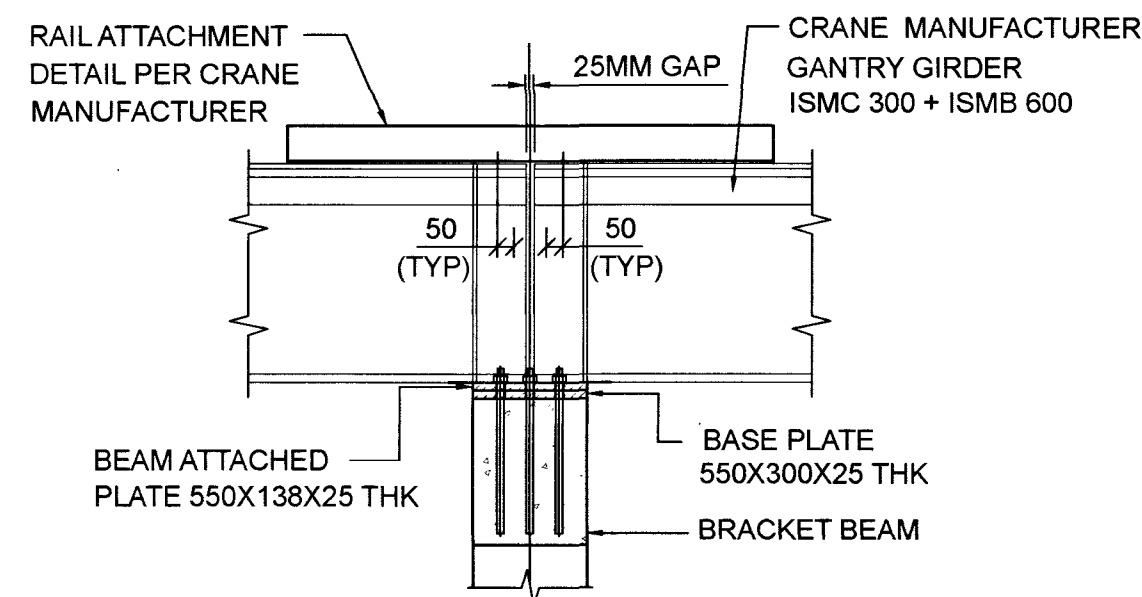
BEAM ATTACHED PLATE  
SCALE 1:15



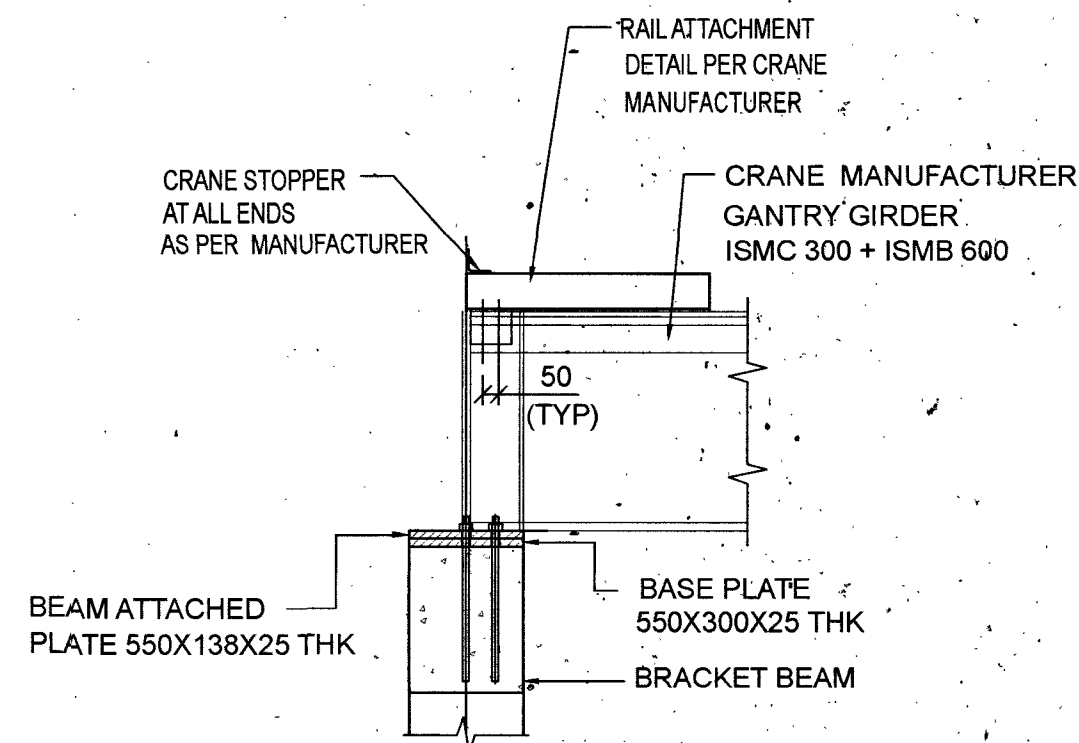
**DETAIL 1**  
SCALE 1:25



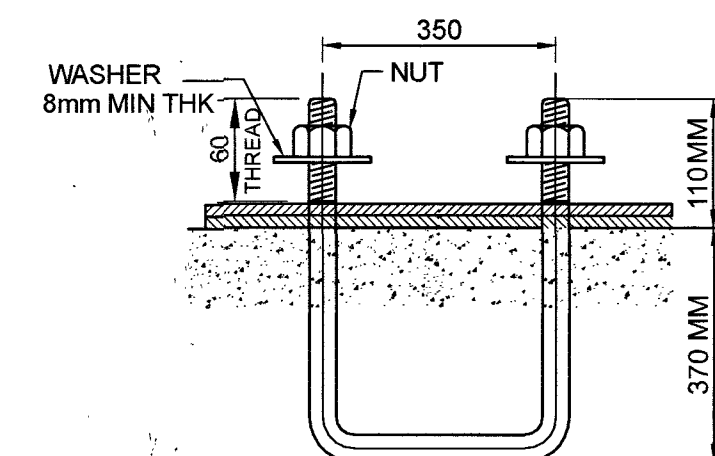
IP1 DETAIL



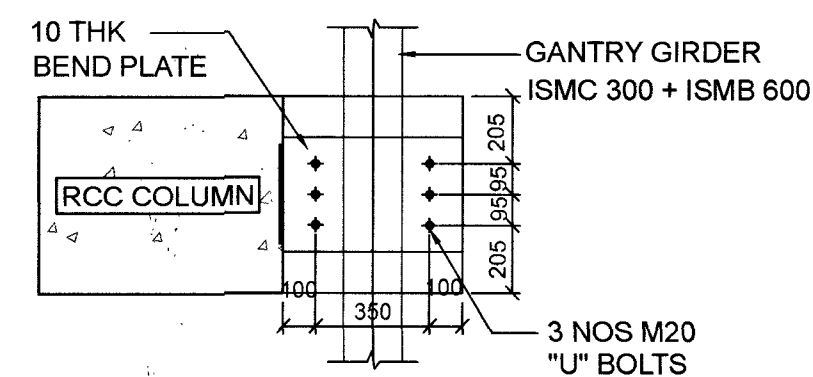
**SECTION 3**  
SCALE 1:25



**SECTION 5-5**  
SCALE 1:25



**"U" BOLT SETTING**  
SCALE 1:10



**SECTION 4**  
SCALE 1:25

## NOTES

1. ALL DIMENSIONS AND LEVELS GIVEN ARE IN MILLIMETERS UNLESS OTHERWISE SPECIFIED.
2. FIGURED DIMENSIONS ONLY SHALL BE FOLLOWED.
3. BOB= BOTTOM OF BEAM  
TOB= TOP OF BEAM

DATE	DESCRIPTION	SIGN
REVISIONS		

## VETTED BY

ALL DETAILS HAVE BEEN THOROUGHLY CHECKED AND ARE IN COMPLIANCE TO STANDARDS, CODES, REGULATIONS IN RESPECT OF SAFETY, SOUNDNESS AND ECONOMY.

*Signature*

PROVN OF HANGAR AND  
ANNEXE BUILDING AT  
INS DEGA VISAKHAPATNAM

ELEVATION ALONG  
GRID 10 TO 17

SHT NO.	S16	<b>HELIOS ENGINEERING CONSULTANTS</b> #38-34-66 FCI COLONY MARRIPALEM VISAKHAPATNAM - 530018
PRO NO.	ST2204	
SCALE.	AS NOTED	
DRN BY.	KSS	
DATE.	28-02-2023	

DESIGNED BY

*Signature*  
DV TRINADH RAO

CHECKED BY

*Signature*  
S SURYA  
MS (STRUCTURES)

**CHIEF ENGINEER (NAVY)  
VISAKHAPATNAM**

REF.DRG.NO : CEVZ/2022/WD-2120(S) Sht.No. 16/40

DESIGNS & DRAWINGS PREPARED UNDER CONSULTANCY FROM M/S HELIOS ENGINEERING CONSULTANTS AND VETTED BY ANDHRA UNIVERSITY

*Signature*  
Kenshi Raman  
Lt Col  
SO 1 (Design)  
for Chief Engineer

*Signature*  
Srinivas Nalla, IDSE  
CE (NF)  
Director (Design)  
for Chief Engineer